

DESIGNING FOR DISCOVERY





CONTENTS

04	WHO WE ARE
12	HOW WE WORK
24	SELECT PROJECTS
82	ADDITIONAL RESOURCES





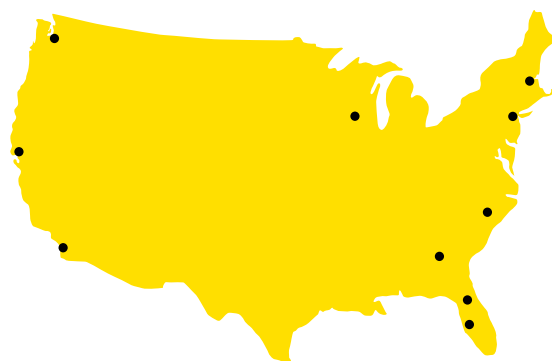
**WHO
WE ARE**

FIRM AND EXPERTISE

95+

years of experience in planning and architecture

we create environments that enhance human potential®



Atlanta, GA · Boston, MA · Gainesville, FL · Madison, WI · New York, NY
Raleigh, NC · San Diego, CA · San Francisco, CA · Seattle, WA · Tampa, FL

320+

dedicated staff to serve our clients

10

offices nationwide

30+

planners: laboratories, healthcare

- Strategic and Master Planning
- Programming and Campus Planning
- Academic, Research and Medical Planning
- Site Planning and Landscape Architecture
- Architectural Design
- Structural Engineering
- Interior Design

350+

design awards

National Rankings

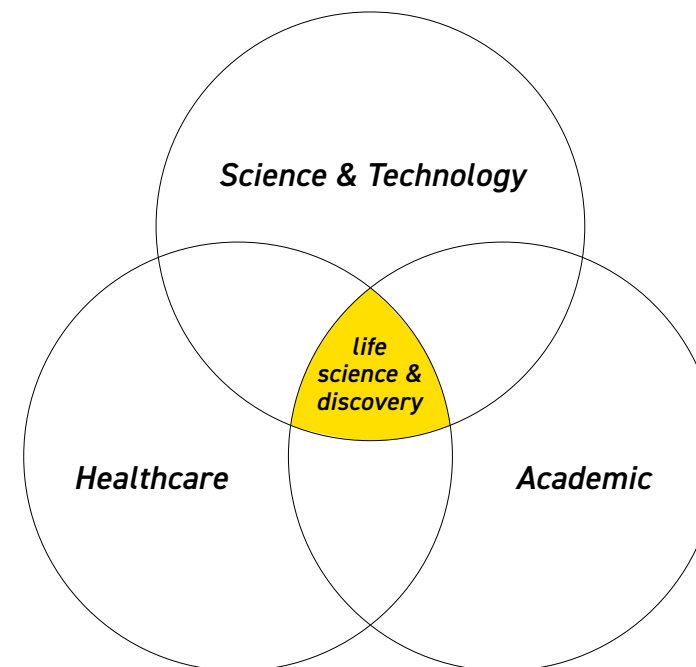
Building Design+Construction Giants // 2025

- 20 Overall
- 2 Laboratory Architecture
- 5 Science & Technology

350+

design awards

- 100 AIA Awards
- 39 IIDA Awards
- 8 Lab of the Year Awards
- 5 ISPE Facility of the Year Awards



ISPE - FACILITY OF THE YEAR AWARDS



International Society for Pharmaceutical Engineering (ISPE)

ISPE is the global industry leader in connecting pharmaceutical knowledge to deliver manufacturing and supply chain innovation, operational excellence, and regulatory insights to enhance industry efforts to develop, manufacture and reliably deliver quality medicines to patients. The Facility of the Year Awards is an annual program that recognizes state-of-the-art projects utilizing new, innovative technologies to improve the quality of products, to reduce the cost of producing high-quality medicines, and to demonstrate advances in project delivery.

- **Center for Innovative Drug Research**
Confidential Client
Special Recognition Award for
Operational Agility: COVID-19 Impact, 2021

- **Innovation Development Center**
Confidential Client
Operational Excellence, 2020

- **Georgia Manufacturing Facility**
Takeda Pharmaceuticals
Honorable Mention, 2019

- **Quality Control Laboratory**
Takeda Pharmaceuticals
Operational Excellence, 2018

- **Flu Cell Culture Facility**
Novartis Vaccines and Diagnostics
Category Winner for Process Innovation
and Overall Winner, 2013

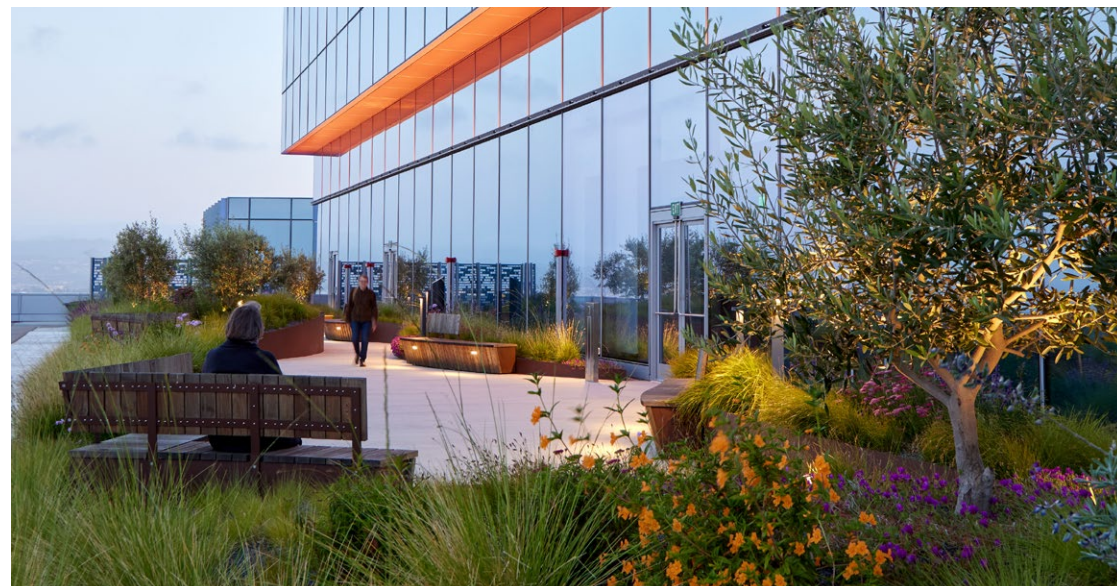
SUSTAINABLE DESIGN

Becoming an industry leader by incorporating people, planet, and prosperity into all designed environments.

We are committed to transforming how buildings are designed and built to support sustainability, resiliency, and human wellness. Regardless of whether clients seek certification, we encourage incorporating safe, healthy, and quality materials and offer sustainability visioning, energy modeling, and life-cycle cost analysis. As evidence of our focus, we have endorsed The 2030 Challenge to achieve dramatic reductions

in greenhouse emissions, reaching toward carbon neutrality on all of our projects by the year 2030.

Flad was an early adopter of the Leadership in Energy and Environmental Design standards, achieving several LEED firsts for the research, science, and healthcare facilities in which we specialize.



Recognized Industry Firsts

- ⊙ **International WELL Building Institute**
Gold Core and Shell Certification
Kilroy Realty Corporation,
The Exchange on Sixteenth Street
- ⊙ **LEED® Gold**
Research Institute in Seattle
Seattle Children's Research Institute,
Building Cure
- ⊙ **LEED® BD+C:**
Core and Shell Platinum*
BioMed Realty, Gateway of Pacific
Phase 1
- ⊙ **LEED® Platinum**
Laboratory in New York
Stony Brook University
- ⊙ **LEED® Platinum**
Process Science Facility
University of California, Davis
- LEED® 2.2 Gold Laboratory**
Johnson & Johnson
- LEED® Gold Laboratory**
Pharmacia

* Highest certification level recognized by the USGBC



HOW WE WORK

PUTTING PEOPLE FIRST

Creative thinking and the joy of delivering a solution based on shared values produces powerful results. Every time.

Every project is founded in an understanding that there is an important need and a promise of transformation. We are driven to build a collaborative of people that form a high-performance team, setting the stage for confidence and the belief that we will deliver the right project for long-term success. Aligning the principal stakeholders with capable professionals who want the best for their institution and are willing to work hard to achieve that is key. We gather principal stakeholders together to focus on purpose, vision, facts, goals, needs, and concepts that define the greater truth for the project,

shaping the right design solutions. A communication plan is equally essential to every project, ensuring stakeholders feel their voice is heard and that they can shape their future. It also helps manage expectations and provides a framework for decision making, conflict resolution, creating an audit trail for the work, and ensuring that the status of the project is shared accurately with everyone on campus over time.



LIVING OUR VALUES



We honor the creative spirit and innovation in all things.



We foster an environment of trust, integrity, and respect.



We embrace both individual initiative and collaboration.



We are trusted partners to our clients.



We are committed to the health and well-being of our communities and the planet.

In partnership with leading research organizations, universities, healthcare institutions, and science-based companies, we design beautiful, innovative environments that enable our clients to make revolutionary discoveries that have a profound impact on society. We are dedicated to providing exemplary service to our clients. Fostering this collaborative approach allows us to challenge

assumptions, solve unique problems, and help our clients achieve their mission through the lens of design. Our environments are an extension of our clients' enterprise, celebrating their talent and reinforcing their brand and culture. Our solutions are customized, mission-driven, and transparent – increasing efficiency, productivity, and identity.



THE SCIENTIFIC WORKPLACE

Transforming the scientific workplace to address next-generation treatments.

Our clients are tackling some of the world's most significant challenges. They are advancing cures for cancer, pioneering gene therapies, and developing medical technologies that transform lives. The people behind these breakthroughs inspire us, and their impact on global health drives our work every day.

Flad is recognized as a global leader in designing science and technology facilities. Our expertise covers the full value chain in the pharmaceutical, biotechnology, and consumer products industries, from discovery and research to pilot-scale and full-scale manufacturing. We work side by side with our clients, combining deep technical knowledge with a collaborative approach, to deliver solutions that accelerate innovation and meet the highest standards.

Our legacy of repeat clients and robust portfolio of specialized projects reflect our dedication to exceptional

service and measurable results. In complex, process-intensive environments, we draw on deep knowledge of cGMP requirements, process flows, aseptic and sterilized products, and specialized equipment to address both immediate and long-term needs.

Throughout every project, we work closely with owners and process engineering teams to develop and refine process design solutions. As process architects and planners, we guide critical decisions from the outset, aligning facility design with regulatory guidance from the U.S. FDA and other global authorities. Our integrated systems approach helps our clients achieve production goals, advance their mission, and maximize the value of their investment.

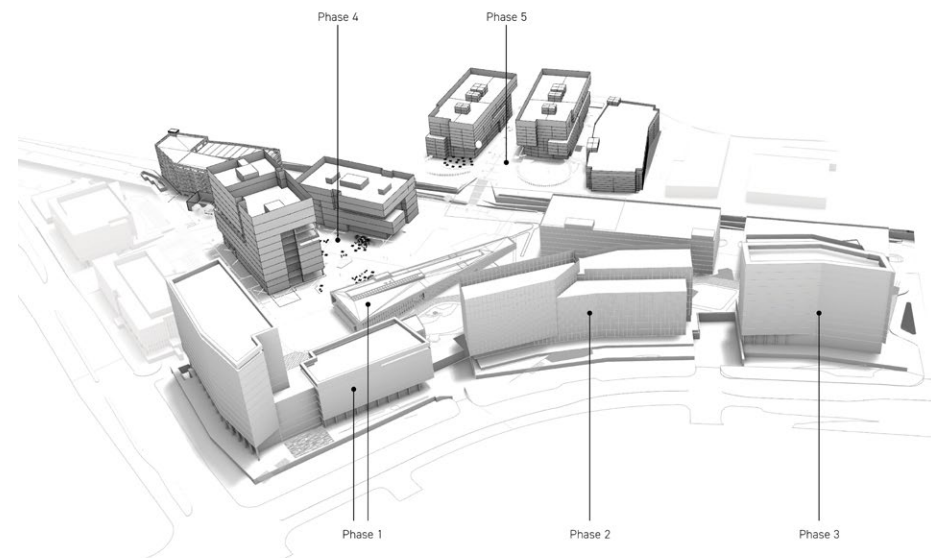


STRATEGIC PLANNING

The Future of Pharmaceuticals.

We understand the critical link between the strategic initiatives of an organization and the identification of the physical resources required to implement those initiatives. The ability of a site and a collection of facilities to support organizational needs over an extended period of time requires a holistic approach to ensure that the outcome is achievable yet flexible

enough to preserve future options. Flad supports our clients with a wide range of strategic planning, from small studies analyzing individual labs to campus-wide master plans mapping out corporate development for an organization's future over the next decade and beyond.



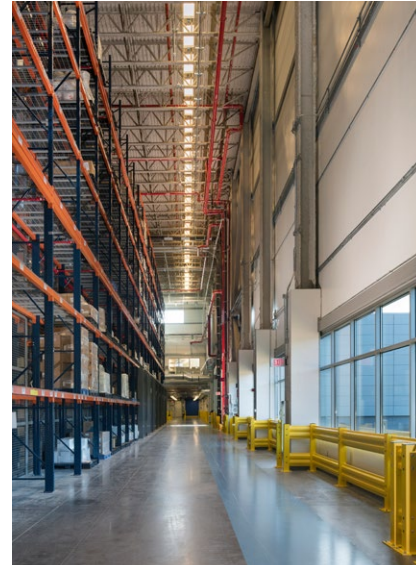
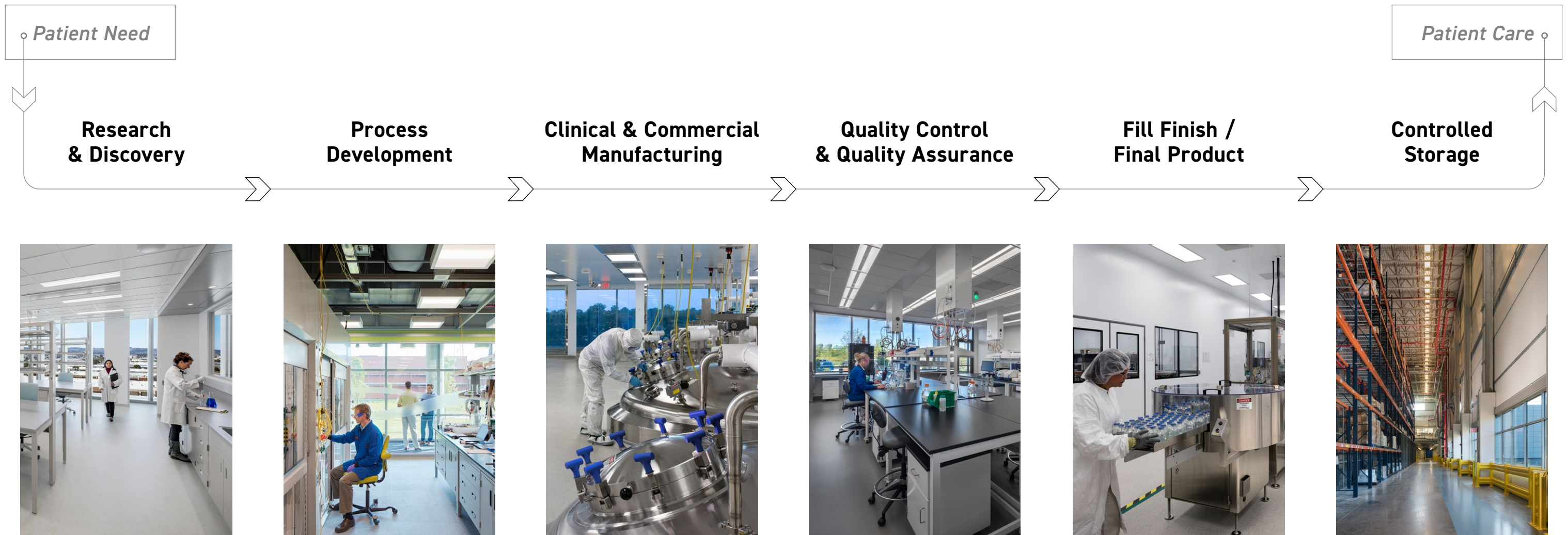
Read more about Flad's strategic planning expertise >>



DISCOVERY TO COMMERCIALIZATION

We partner with clients across the entire pharmaceutical and biotechnology life cycle, from foundational strategic planning and innovative research to advanced development, scale-up, and regulated manufacturing. Our integrated approach connects each phase of design and delivery, aligning

scientific, operational, and regulatory requirements from the outset. By understanding how early decisions influence downstream performance, we help clients create environments that support efficient workflows, compliance with cGMP requirements, and long-term adaptability as programs evolve.





SELECT PROJECTS

fluid inspiration



Facing generational changes in expectations for lab research environments, this nationally recognized cancer research institute sought to grow in place while honoring its history in shaping a culture of innovation around its lakefront location. In support of this mission, Flad designed the transformation of 50,000 square feet of space, revitalizing facilities not formerly committed to science, while offering new thinking about placemaking, belonging, and connection.

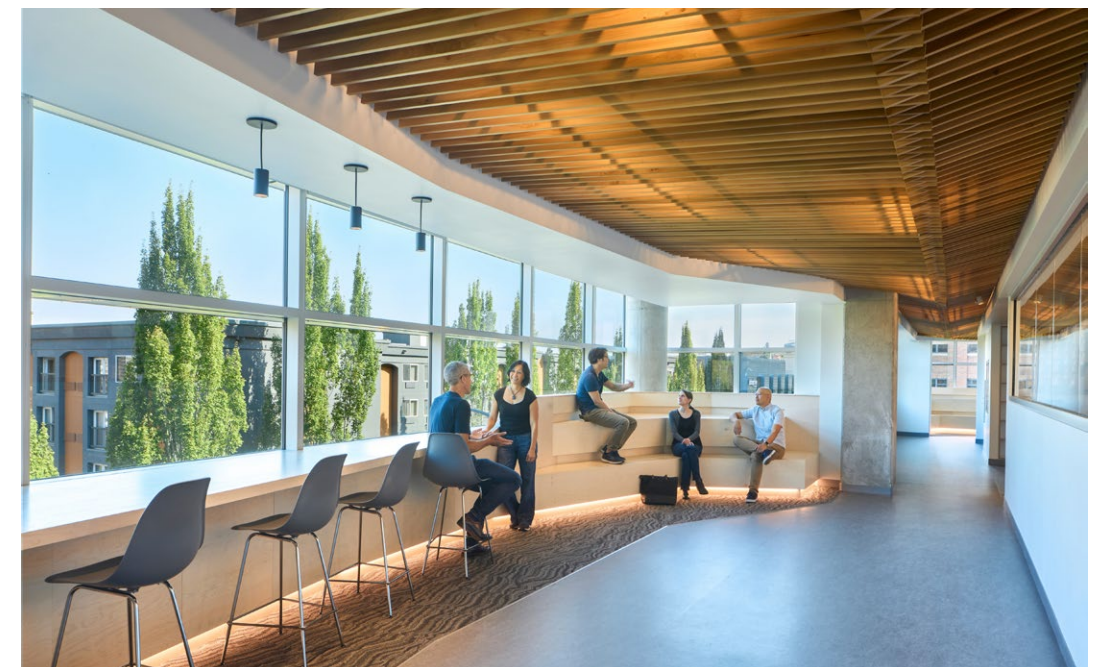
The renovated facilities bring the current evolution of research environments typically seen in higher education environments into a present-day research institute, with collaboration zones offering many varieties of tools for innovation. The state-of-the-art laboratories provide researchers top-tier facilities, while both the laboratories and support spaces offer visual connectivity among interior spaces and access to the site's exceptional waterway views.

Reinforcing group unity, culture, and place, research teams have specially designated spaces to display their mission with identity, pride, and belonging now leading their story.

Programmatic Components

50,000 SF
Scientific Workplace Program
Office / Conference / Amenity
Laboratory Program

[View the video >>](#)



an enhanced research environment



With a commitment to improving human health through innovative science and cutting-edge therapies, this global biopharmaceutical company sought to create a dynamic next-generation workplace. Built on supporting their principles of collaboration and communication across teams, the overarching vision of this high-rise fit-out centers on vibrant, open office and laboratory spaces with assets that are shared as part of a unified culture.

This project embodies client goals by providing spaces based on key planning concepts of arriving, networking, focusing, and supporting. Staff is co-located with the freedom of work environment choice allowing multidisciplinary teams to share space and remain connected.

The concepts are implemented through a spatial and furniture kit of parts ranging from a library environment for heads-down focused work to seated and standing team tables. Enclosed collaboration rooms round out the workplace offerings, providing appropriate spaces for more formal, longer-term, and interactive collaborative efforts.

Programmatic Components

240,000 SF
Scientific Workplace Program
Office / Conference / Amenity
Laboratory Program

Certification

LEED Gold
Fitwel 2-Star Rating

[View the video >>](#)



integrating nature and technology



Offering exceptional views of the Pacific Ocean and its surrounding natural landscape, Breakthrough Properties' Torrey Heights Development works in tandem with its environment to express its own character while echoing the site's layered geologic formations in its coffered façade. The steeply graded window panels establish its dynamic, tessellated signature envelope.

To create flexible, daylight-infused interior floor plates that maximize energy efficiency, designers employed digital tools to assist in massing, placement, and façade development. The interiors promote occupant wellness by providing natural daylight and views without compromising building performance.

This life science campus provides three thoughtfully designed, state-of-the-art scientific workplaces and an amenity building, offering top-tier leasable space for biotechnology firms in San Diego.

Surrounded by research laboratories, offices, and amenity spaces, a publicly accessible landscape plaza unites the campus and provides connection to the outdoors, while the design remains in constant dialogue with its surroundings, integrating nature and technology to create an inspiring workplace.

Programmatic Components

- 515,000 SF
- Scientific Workplace Program
- Laboratory Program
- 400-Person Conference Space
- Parking Structure
- Amenities: restaurant, bar, cafe, library, lounge, fitness center, pickleball courts, yoga studio, spa, juice bar, and gardens

Certifications

LEED Gold



responding to changing research needs



The Flad team has designed a landscape of wet and dry research space that positions this research institute for decades of groundbreaking research. The program outcomes will result in interactive research communities on each floor of this LEED Gold building that respond immediately to agile scientific discoveries and accelerate the delivery of successful cures. Our design fosters rapid cross-pollination throughout the building, connecting these interior communities together to readily respond to changing research needs in the areas of cancer immunotherapy, neuroscience, child health and behavior, and bioethics.

The Therapeutic Cell Production Center (TCPC) incorporates a cGMP suite for cell culture and purification of immunotherapy drug products in clinical trial Phases I and II. Cell production lots are small volumes using state-of-the-art disposable technologies. The suite has ten production rooms and support areas at ISO 7 classification. An adjacent viral vector production suite of two ISO 7 rooms is serviced by a discrete set of gowning rooms and an air handling unit. Quality control labs and production documentation areas dedicated to the TCPC are also located in efficient proximity on the same floor.

Programmatic Components

540,000 SF
Laboratory Program
Scientific Workplace Program
Office / Conference / Amenity

Flad and Aedas co-led this project, with Flad serving as Architect of Record for all scientific workplace and research space and Aedas serving as Architect of Record for the building exterior and interior public space.



accelerating pharmaceutical development



From the facility's early conceptual visioning sessions, this Fortune 100 pharmaceutical company's goal was to dramatically improve the drug development process. The new Innovation Development Center integrates multiple strategies to fulfill that vision, including rapidly transformable laboratories, flexible and adaptable workspaces, increased opportunities for collaboration, visual connectivity to facilitate team productivity, and enhanced support systems throughout the facility.

The Center's highly adaptable laboratory infrastructure enables bench reconfigurations to be completed in two to three hours, with additional time allocated for decontamination and recommissioning, without impacting other work being conducted in the immediate vicinity and with no renovations or construction.

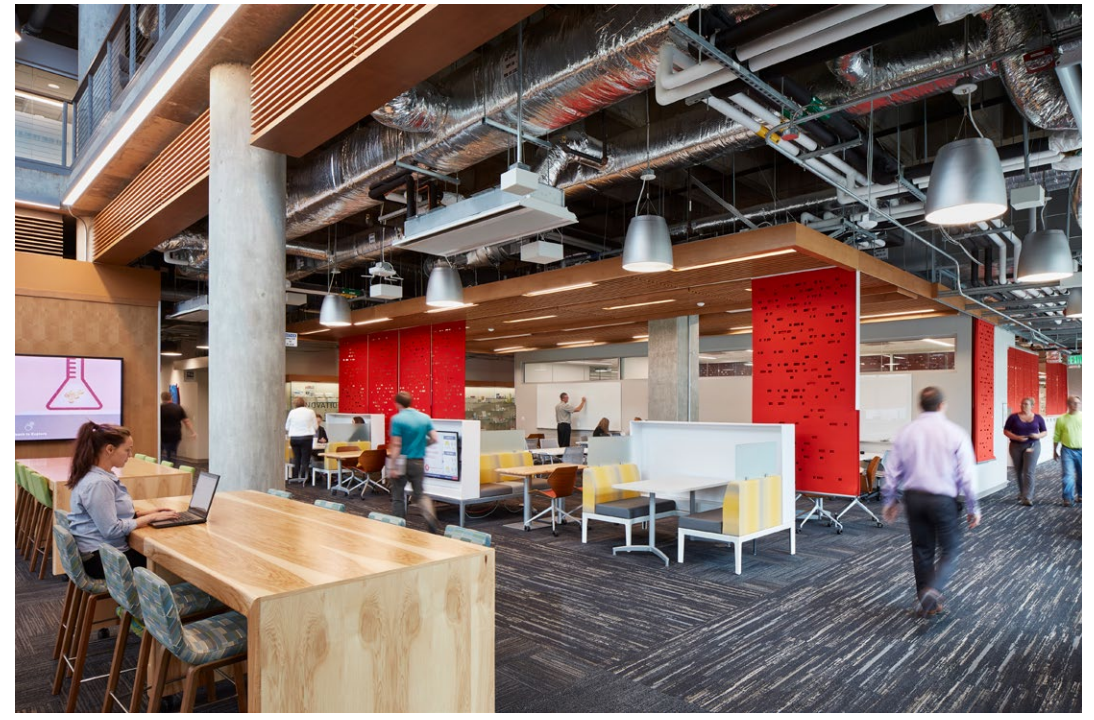
By rethinking basic assumptions of the development process and implementing leading-edge improvements, the Center reduces delays, eliminates waste, and increases efficiency, enabling researchers to reduce the time it takes to bring successful therapies to market from years to mere months.

Programmatic Components

- 130,000 SF
- Scientific Workplace Program
- Office / Conference / Amenity
- Highly Flexible Laboratories
- Adaptable Workspaces
- Quality Control Laboratory Program

Awards

ISPE 2020 Facility of the Year
Award for Operational Excellence >>



campus connectivity



As a leading biotechnology company driven by a culture of scientific curiosity, Regeneron seeks to discover and develop life-transforming medicines for a wide range of serious conditions. To accommodate continued growth and improve the drug development process, they initiated a campus master plan, the Loop Road Expansion, and the creation of the Preclinical Manufacturing and Process Development (PMPD) Building.

After a strategic planning effort that examined the existing campus and planned growth, a master plan was established to guide a multiphase expansion, emphasizing connectivity among therapeutic focus areas and scientific leaders based on a model of convergence.

The PMPD Building offers extensive, technically complex space for bench and pilot-scale operations, designed around the concept of flow, drawing staff from community and collaboration spaces to focused research areas.

The Loop Road Expansion increases laboratory and office space while providing parking, amenities, infrastructure, and a central utilities plant. A multilevel main street spine organizes the campus with interaction and amenity spaces, including a café, fitness center, and conference facilities.

Programmatic Components

900,000 SF

Scientific Workplace Program

Laboratory Program

Bench & Pilot-Scale Operations



strategic renovation and reconfiguration



As one of the world's most successful pharmaceutical corporations, this confidential client is constantly seeking to improve its ability to respond to the world's health needs and develop new therapies. To that end, they have embarked on a groundbreaking project with a new vision for their research and development community, integrating new research paradigms that incorporate wet bench research with sophisticated and powerful scientific equipment in conjunction with specialists in data analytics.

In conjunction with this new vision for the entire campus, 20,000 square feet of strategically important renovations and reconfigurations were implemented. These projects transform how research is done, both inside and outside of traditional lab settings, encouraging and supporting team relationships between lab and non-lab researchers in finding new discoveries.

Innovative strategies include continuous floor-to-ceiling glass walls providing transparency and shared light into laboratories and adjacent office space, and open office areas with informal collaboration zones near group entrances. Existing fume-hood-dense chemistry labs have been transformed into open, day-lit biology research labs, supporting utility-intensive benchtop equipment at the perimeter with flexible island benches in the center. These arrangements promote agile and responsive solutions to rapidly changing research initiatives and technologies.

Programmatic Components

20,000 SF
Laboratory Program
Scientific Workplace Program
Office / Conference / Amenity



efficiency and well-being



This state-of-the-art, 1.1 million-square-foot biotech manufacturing campus integrates the technical requirements of both upstream and downstream manufacturing, while providing a work environment focused on the well-being and efficiency of a highly dedicated workforce with a shared mission: to deliver plasma-based therapies for people affected by rare diseases and other highly specialized conditions.

Flad's design includes cGMP manufacturing units, warehouse and freezer storage, two testing laboratories, a 300-person administration building, and a central commons with a cafeteria, gym, and training rooms.

The manufacturing units include plasma fractionation and production of immunoglobulin and albumin therapies. Licensing and regulatory requirements for the FDA, European Union, and other countries were implemented. These spaces are organized along a two-level spine that runs the length of the facility, facilitating flows of personnel, material, samples, and waste while minimizing conflicts with maintenance operations. The warehouse and freezer storage are centrally located along the spine to provide adjacencies to raw material users and finished goods distribution. The campus is designed with flexibility for future expansion.

Programmatic Components

1,100,000 SF
cGMP Program
Laboratory Program
Scientific Workplace Program
Office / Conference / Amenity

Awards

ISPE 2019 Facility of the Year Awards
Honorable Mention >>



helping deliver tomorrow's medicine today



Next-generation research takes place in a third-floor Potent Compound Facility that has been designed with an eye toward humanizing what ordinarily can be a cold and sterile environment. The last unbuilt portion of this Bay Area biotech company's facility, the top floor shell space was fit out to include GMP clinical manufacturing tableting suites. The project also includes the design and construction of a small GMP formulations scale-up chemistry suite on the first floor of an adjacent building.

Charged with creating a showcase zone for visitors and a functional, restricted zone for employees who spend most of their hours in multilayered protective clothing, the designers conceived a safe and secure laboratory where, through the use of color and a multisensory framework, staff can connect with nature and the spaces where they work. An artistic representation of Circadian rhythms at the entry gives way to dynamic spaces that offer lab employees a respite from their sensory-deprived work. To take advantage of key views of the bay and a landscaped plaza, labs run along one long, angled wall away from the exterior, allowing the corridor to become shared space along the building's perimeter.

Programmatic Components

26,000 SF
cGMP Program
Quality Control Laboratory Program
Scientific Workplace Program
Office / Amenity

[View the video >>](#)



helping deliver tomorrow's medicine today



The new Center for Innovative Drug Research (CIDR) brings together multiple research groups from across this Fortune 200 client's campus into a single, 365,000-square-foot, state-of-the-art facility that supports world-class research, fosters a community of collaboration, and inspires life-changing discoveries. Separated into three research wings connected by a shared spine, the four-story CIDR is one of the largest pharmaceutical research facilities on the West Coast, housing drug safety evaluation, structural chemistry, medicinal chemistry, and a variety of biology laboratories, including discovery virology, clinical virology, biomarker sciences, biologics, target biology, immunology, and core services.

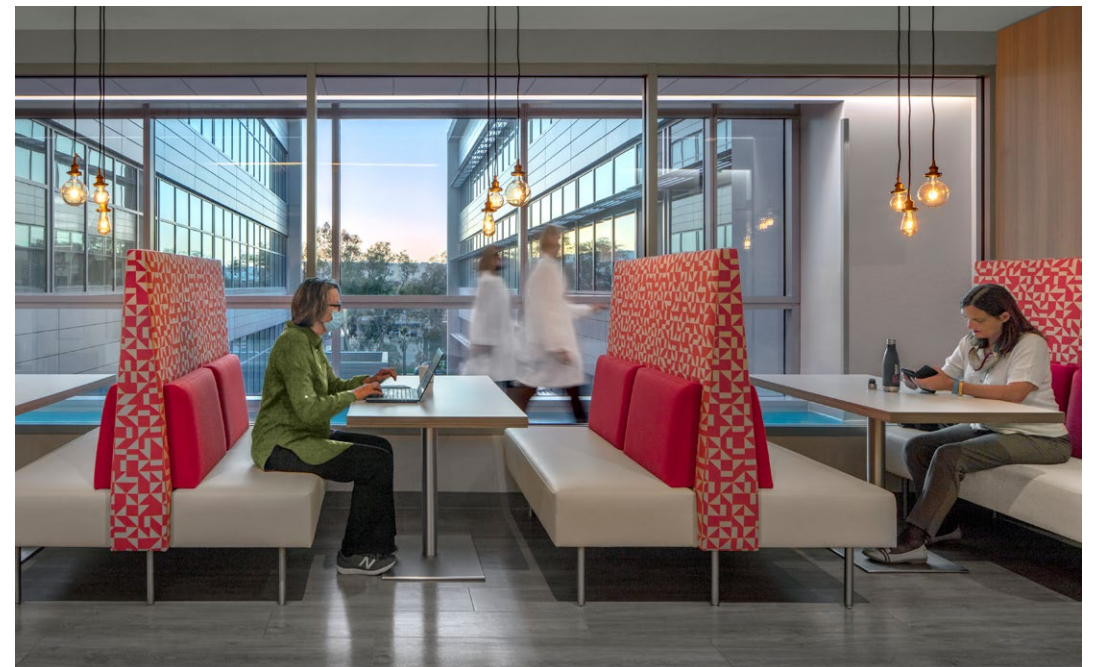
Conceived as more than merely a bricks-and-mortar building, the Center creates a collaborative home for its community of scientists. The CIDR's overall layout was derived from the desire to place research groups as close together as possible. The main spine of the E-shaped floor plate offers easy access to each of the laboratory wings, while also hosting work areas and other shared spaces. The layout strategically reduces the distance between the groups, further fostering interaction. The project is LEED Gold certified.

Programmatic Components

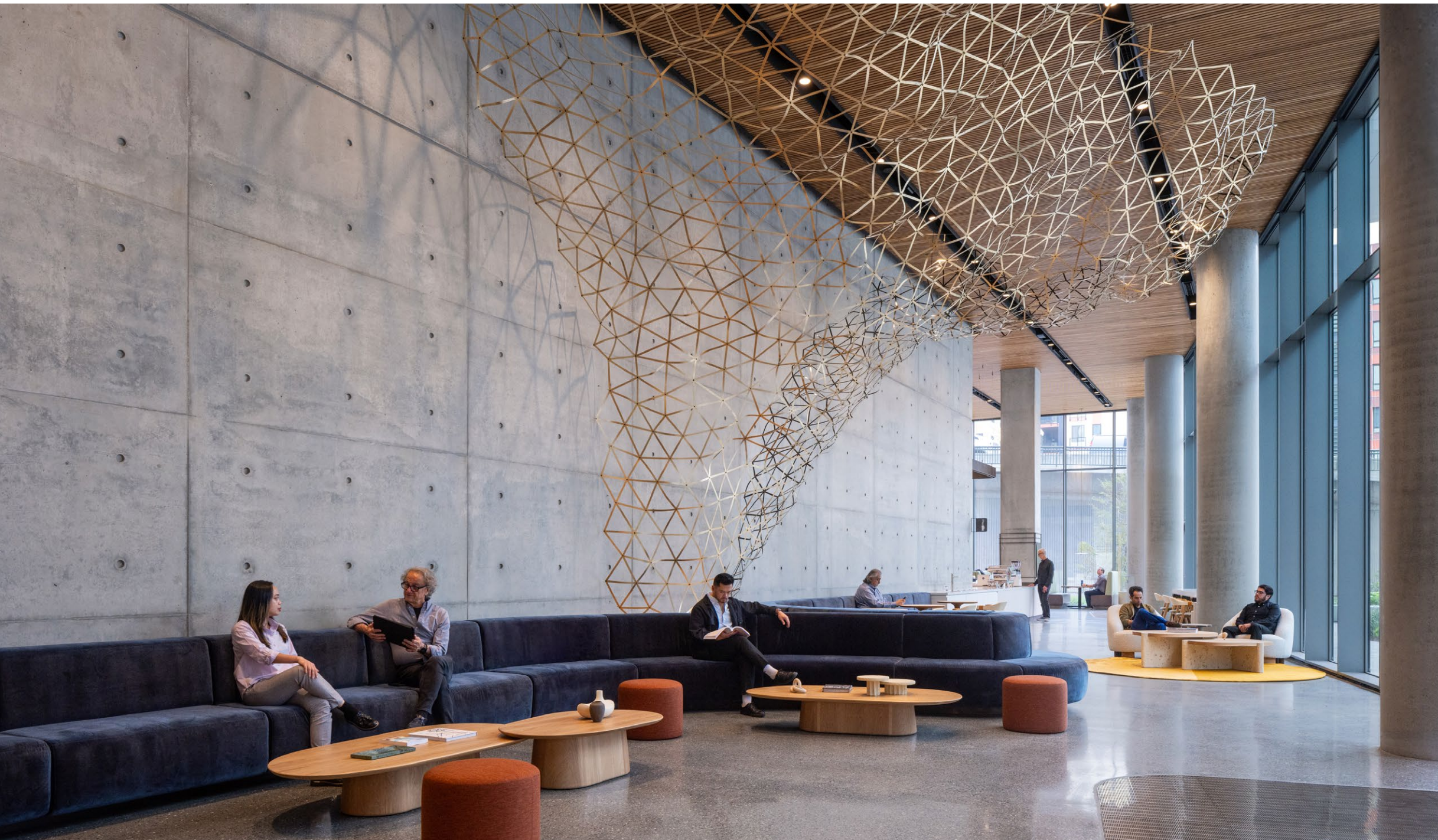
365,000 SF
Laboratory Program
Scientific Workplace Program
Office / Amenity

Awards

ISPE 2021 Facility of the Year Awards, Special Recognition
Award for Operational Agility: COVID-19 Impact >>



creating the setting for discovery



Featuring 315,000 square feet of leasable laboratory and office space, the new, six-story Avia Labs offers state-of-the-art facilities for life science research organizations.

With its proximity to world-class institutions and providing an ideal location to establish a hub for life science research, the facility is positioned for easy access to public transportation. Envisioned to meet the demands of biotechnology companies and academic research institutions, the facility offers innovative companies and their teams a place to connect, collaborate, and achieve life-changing breakthroughs. Its state-of-the-art life science lab and office space is built with warm-shell infrastructure and flexible floor plates ranging from 20,000 to 80,000 square feet.

With a goal of elevating tenants' experience of life at work, the facility features an inviting lobby with coffee and food service, a full fitness center and locker rooms, a third-floor terrace with mountain views, and a variety of conference spaces.

Designed to achieve LEED Gold and Fitwel certifications, the building is designed with office space wrapped by a sheer curtain wall of glass along the north half of the facility, while the remaining space is clad with floor-to-ceiling windows between reinforced concrete panels.

The 2.06-acre site features 164,000 square feet of parking in a four-level garage, accommodating up to 459 cars and 46 bicycles.

Programmatic Components

315,000 SF
Scientific Workplace Program
Laboratory Program
Parking Structure
Amenity Spaces



changing how we treat disease



Juno Therapeutics believes with absolute conviction that they can engineer the cells within our immune system to eradicate cancer and other serious diseases. Selected to design their new headquarters and research center, our team was immediately infused with their compelling commitment and felt the same sense of urgency Juno was facing to help them deliver successful products to their patients.

The project integrates key elements of the company's culture and enables active collaboration by personnel as they move from ideas to delivery of product candidates. During our initial visioning phase, Flad helped Juno properly forecast their growth in which their population was estimated to triple within 18 months, including the addition of an entirely new commercialization group. The design team developed an interchangeable wet and dry research model that can flexibly accommodate large volumes of new people as well as newly discovered research demands that evolve over time through clinical trials, FDA approval, and commercialization.

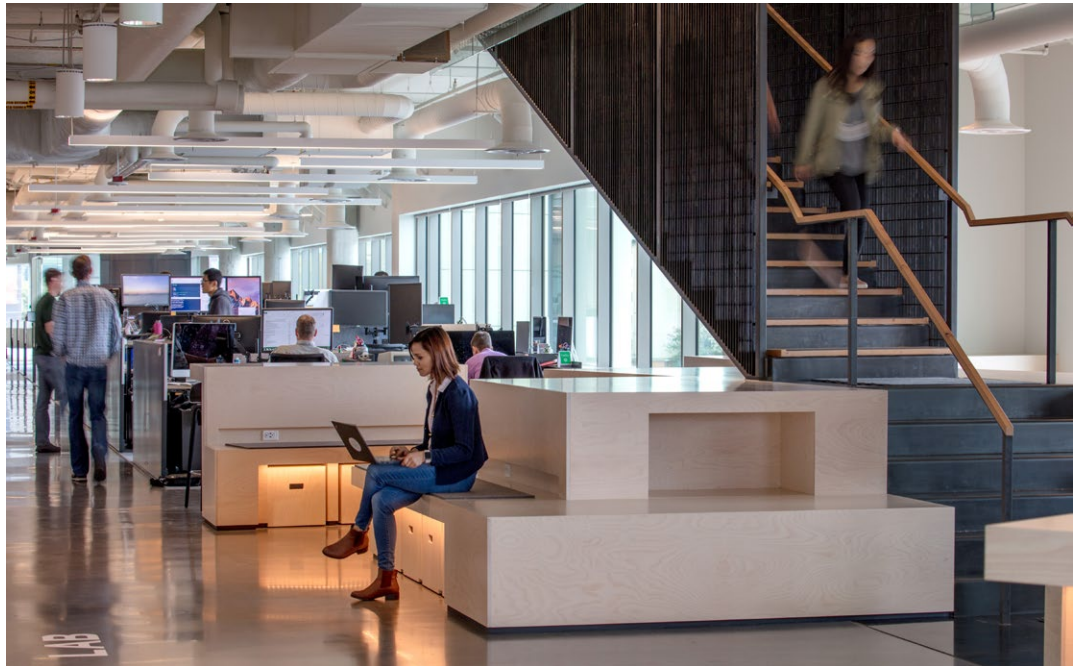
Programmatic Components

240,861 SF
Laboratory Program
Scientific Workplace Program
Office / Amenity

Awards

IIDA Northern Pacific Chapter INaward

[View the Complete Story >>](#)



creating connections



Adaptive Biotechnologies proposed a new operational definition for a science headquarters as a workshop for ideas, eschewing traditional work and lab space in favor of an innovative center that advances learning and culture first. Adaptive founders worked with Flad to design a new four-story, 100,000-square-foot headquarters and laboratory in Seattle that expands the company's footprint in pursuit of revolutionary diagnostics and therapeutics.

The new facility helps unify groups that once occupied separate buildings and separate spaces. Teams of scientists from research, product development, and production now have shared access to dynamic and blended settings that encourage them to learn from and influence one another. Connections among people are physical and visual: glass walls stimulate thinking, the community stair trumps the elevator, and floor openings shorten the distance between people and ideas. The headquarters reflects the concept of science as a workshop for ideas that is not separate from, but rather fully engages, its moral purpose: to improve patients' lives.

Programmatic Components

- 100,000 SF
- Scientific Workplace Program
- Office / Amenity
- Laboratory Program

[View the Complete Story >>](#)



**Confidential Client,
Research Incubator Fit-out** ↻

fostering tomorrow's breakthroughs

With the goal of accelerating development of life-saving therapies, this Fortune 500 pharmaceutical company expanded its ability to support early-stage companies with its resources and expertise. This new 42,200-square-foot fit-out offers laboratories, offices, support spaces, and common areas to start-up companies pursuing pharmaceutical innovations to improve human health.

The layout provides flexible lab and office space to accommodate various company sizes and lease models. Lab modules are linked to allow tenants to expand into adjoining labs as needed, and utilities are organized in a consistent and accessible manner.

Workstations and private offices are located near assigned lab spaces for proximity and visual connectivity. Transparency among the labs and office environments puts science on display while offering a safe work environment and maintaining security for

each organization's intellectual property. Centrally located lab support services include glasswash, freezer rooms, and public common areas such as conference rooms and social hubs.

Programmatic Components

- 42,200 SF
- Scientific Workplace Program
- Office / Amenity
- Laboratory Program



**Takeda Pharmaceuticals,
Quality Control Laboratory** ↻

achieving lean operations through visual connectivity

As the demand for plasma-derived therapies increases globally, the 16,000-square-foot Quality Control Laboratory is a key element of Takeda's strategy to secure a better, faster, and more economical delivery to patients worldwide. Its relocation allows for future expansion opportunities and fully decouples the QC Lab from manufacturing operations and infrastructure.

The planning process and resulting solutions for this next-generation QC lab reflect the company's commitment to improve the efficiency of their operation and give special attention to the effectiveness and well-being of people tasked with delivering therapies that enable people with life-altering conditions to lead better lives.

Focused on operational excellence and quality, the QC Lab team used this opportunity to disassemble their entire

operation, with workflow and quality improvements guiding the planning and design team, promoting a shared sense of pride in their accomplishments.

Programmatic Components

- 16,000 SF
- QC Lab Program
- Scientific Workplace Program
- Office / Conference / Amenity

Awards

ISPE 2018 Facility of the Year
Award Operational Excellence >>





**Confidential Client,
Corporate Scientific Workplace** ↗

improving patient outcomes

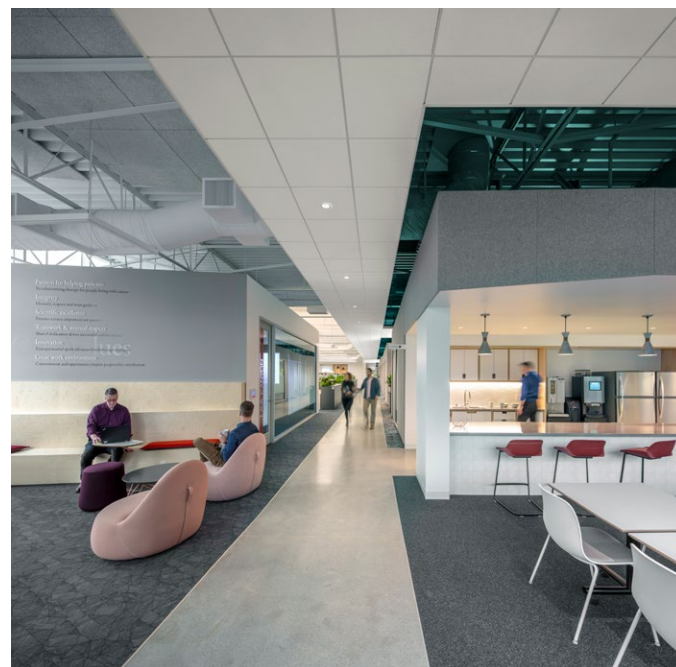
Driven by a core mission to enhance public health and save lives through transformative cancer therapies, this global biotechnology giant looked to its Pacific Northwest headquarters campus to deploy a new workplace model that emphasizes user experience for enhanced research and development operations.

Comprised of open and private office space as well as dedicated areas for collaboration, social gathering, and respite, this 20,000-square-foot tenant improvement carefully integrates workplace dynamics with the technical requirements of laboratory settings to create an all-encompassing scientific workplace environment. Drawing inspiration from its immediate Pacific Northwest surroundings, the building supports health and wellness by connecting employees to nature through plentiful daylighting and enhanced outdoor accessibility – further reinforcing the core mission of saving lives.

Through purposeful, user-centric design, this new facility enables the client to continue their long history of developing a diverse suite of therapies and ultimately improving outcomes for patients with hematologic and solid cancerous tumors.

Programmatic Components

- 20,000 SF
- Scientific Workplace Program
- Office / Conference / Amenity
- Laboratory Program



**eGenesis,
Scientific Workplace Fit-Out** ↗

driving innovation

Approximately 20 people die each day awaiting an organ transplant. Understanding that human donor organs may never fully meet transplant demand, eGenesis is committed to ending global transplant shortages through xenotransplantation, the process of transplanting living organs, tissues, or cells from one species to another.

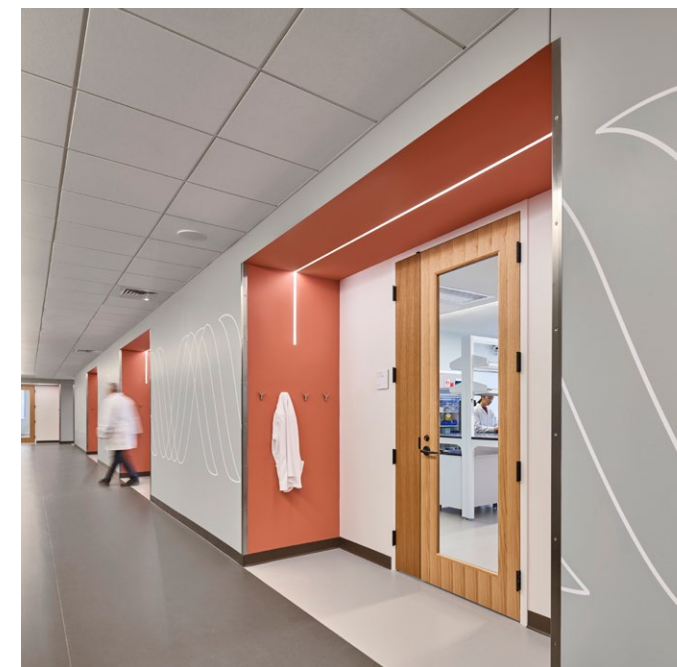
To increase capacity and drive innovation, Flad assisted the client with a 52,400-square-foot expansion of their corporate headquarters, involving the tenant fit-out into new laboratory and office space. The 16,400 square feet of laboratory space includes tissue culture and open lab spaces to support cloning research, along with additional scientific workplace and administrative support spaces.

In addition to providing architectural, laboratory, and interior design services, Flad provided wayfinding signage and graphic elements for additional impact. The resulting facility accommodates up to 160 workstations with 17 closed offices and multiple conference rooms, supporting collaboration. The lab accommodates 100 bench spaces with up to 50 biosafety cabinets for tissue culture. Amenities include a café and a break area on a separate floor.

The new facility supports the vital work eGenesis is pursuing to improve patient outcomes and save lives.

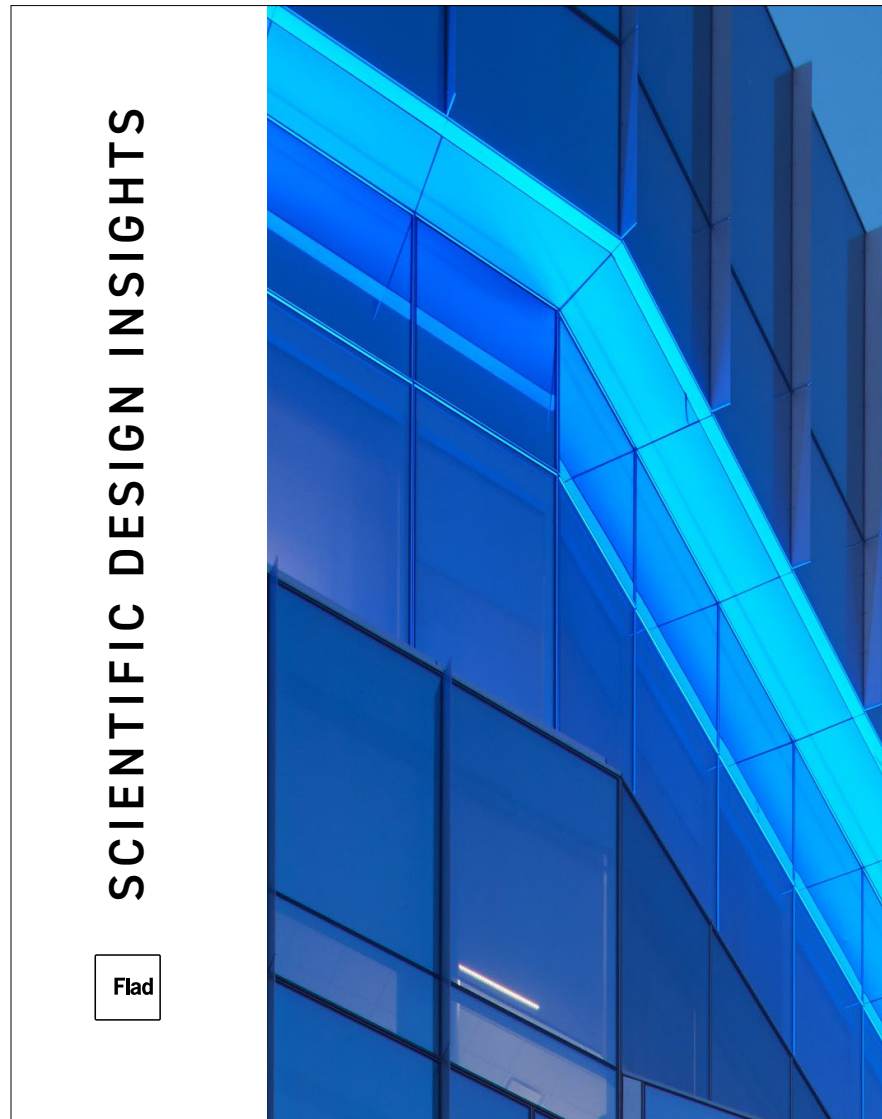
Programmatic Components

- 52,400 SF
- Laboratory Program
- Scientific Workplace Program





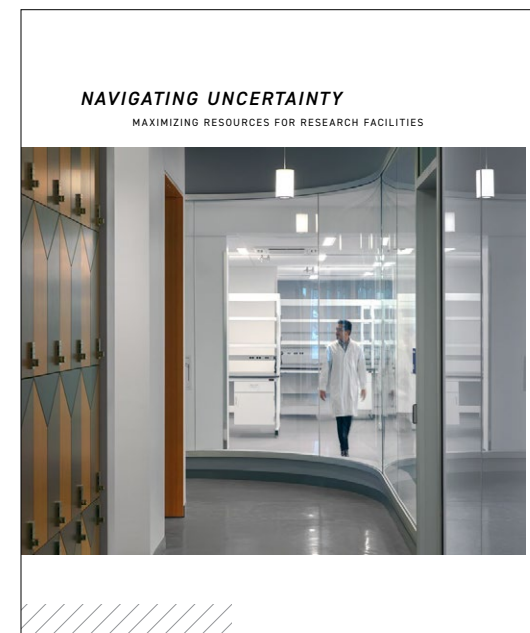
ADDITIONAL RESOURCES



> **Scientific Design Insights**
Expert advice, proven designs,
and stories to inspire



> **Pharma Biomanufacturing Expertise**
Helping Deliver Tomorrow's Medicine Today



> **Navigating Uncertainty**
Maximizing Resources for Research Facilities

CLIENT LIST

Abbott Cancer Diagnostics	eGenesis	Mount Sinai Hospital
Abbott Laboratories	Eisai	National Institute of Environmental Health Sciences
Adaptive Biotechnologies	FibroGen	National Institutes of Health
Alexion Pharmaceuticals	Fujifilm Cellular Dynamics	Nektar Therapeutics
Allergan	Genentech	Novartis
Amgen	Genzyme	Northwell Health
Arrowhead Pharmaceuticals	GlaxoSmithKline	Princeton Plasma Physics Laboratory
AstraZeneca	Healthpeak Properties	Promega Corporation
Bausch and Lomb	Illumina	Regeneron Pharmaceuticals, Inc.
Bayer	Influenza Research Institute	Samsung Biologics
Beckman Coulter	Juno Therapeutics, A Bristol Myers Squibb Company	Seattle Children's Research Institute
Biogen	Kilroy Realty	St. Jude Children's Research Hospital
BioMed Realty	Kodiak Sciences	Syngenta
Boehringer Ingelheim	Longfellow Real Estate Partners	Takeda Pharmaceuticals
Breakthrough Properties	Mayo Clinic	Texas Biomedical Research Institute
Catalent	Medtronic	The Jackson Laboratory
Centers for Disease Control and Prevention	Merck	Tufts University Regional Biocontainment Laboratory
Cleveland Clinic	MilliporeSigma	U.S. Army Corps of Engineers
Connecticut Department of Public Health	Moffitt Cancer Center	Vyriad
CSL Seqirus	Momentive	ZymoGenetics
Donald Danforth Plant Science Center	Monterey Bay Aquarium Research Institute	



Flad Architects is a national planning and design firm committed to creating environments that enhance human potential. In partnership with leading research organizations, universities, healthcare institutions, and science-based companies, Flad designs innovative facilities that enable revolutionary discoveries that have a profound impact on society.

Over 95 years of passionate and rigorous focus on buildings devoted to the sciences has earned Flad consistently high rankings among the top 20 architectural firms, both overall and in the specific areas of science & technology, academic, and healthcare design.

Flad.com

Jodi Mulcahy

Principal

National Director of Marketing and Strategy

jmulcahy@flad.com

